



Steve Brine's CHANDLER'S FORD POST

A positive (non glossy) publication produced at no cost to the taxpayer by your energetic local Conservative MP Steve Brine and delivered by volunteers across Chandler's Ford, Hiltingbury and North Millers Dale.

■ **PAGE TWO**

Westminster Report; including ground breaking breast cancer report launch

■ **PAGE THREE**

World class cancer centre and 'Fair Fares' for young people campaign

■ **PAGE FOUR**

Memories of Summer and join the 'Pride in Chandler's Ford' team

MP BACKS LOCAL INVESTMENT AND JOBS



Chandler's Ford MP Steve Brine officially opened the new UK head office of insurance giant Ageas recently.

The company has been in Chandler's Ford for the past 21 years but recently moved its 1,200 employees to newly refurbished offices on the Hampshire Corporate Park, off Templars Way.

Steve and his five year old daughter Emily joined Andy Watson, CEO of Ageas UK, at an employee and family fun day in September to cut the ribbon and wish the team well.

The MP told The Chandler's Ford Post; "Ageas is a growing and very successful company providing high quality employment in the area. It is excellent news the company decided to invest in such a fantastic new UK headquarters in Chandler's Ford.

"It's clearly not a small business but they've retained a real family feel to the business and that's great to see in the modern corporate world. I wish them every success for the future in their new home."

Howzat!



NOT EXPECTING A CALL ANYTIME SOON...

Local MP Steve Brine is not expecting an Ashes call up anytime soon but he seemed to enjoy a recent visit to the thriving Compton & Chandler's Ford Cricket Club. The club maintains ten men's teams as well as four for juniors.

Find out more: www.comptonandchandlersfordcc.co.uk

BRITAIN AND THE E.U. STEVE FIGHTS TO GIVE US A SAY

MP backs historic referendum Bill 100%

If you're aged 56 years or under you've never had a direct say over Britain's relationship with the European Union and that is simply not good enough, says Steve Brine.

The MP for Chandler's Ford is backing the EU Referendum Bill currently going through Parliament which will grant local people a say over our membership but admits he is frustrated it cannot come sooner.

"People ask me all the time why we can't have that referendum now and I share their frustration but the fact remains we don't have a majority in the House of Commons and our coalition partners will not support us on this. That is why we're legislating now – via a Private Members' Bill – and making it crystal clear a majority Conservative Government led by David Cameron will renegotiate our membership and put that to the people by 2017. Crucially, the question will be a straight in or out so we can have the debate and settle our membership once and for all."

Find out more at: www.stevebrine.com/wewantoursay

NEWS IN BRIEF

WELCOME FOR MARRIAGE TAX BREAK

Steve Brine has welcomed news of a Transferable Tax Allowance for married couples, announced this Autumn by the government.

The Chandler's Ford MP said: "We believe that marriage is an important institution at the heart of a strong society, and I am delighted that we will let hardworking people who are married transfer £1,000 of their tax free income to their partner. This will recognise marriage in the tax system as we promised and sending this signal is the right thing to do."



'PUNITIVE' PROPERTY TAX RULED OUT

MP Steve Brine has welcomed news that the Conservatives have ruled out what he called a 'punitive' new tax – dubbed by some a mansion tax – on local homes.

He says: "Not only is this a regressive idea it would hit my constituents very hard because many people here, who certainly don't live in mansions but are asset-rich because of the high cost of property in the area, would be drawn into a costly set of new taxes to live in their own home. It's madness and I will not support it."

MP ACTS ON NUISANCE CALLS

Steve Brine has joined a cross-party group of MPs tackling nuisance calls which blight peoples' lives.



The group was set up earlier this year by Mike Crockart MP, and Steve joined the team following an increase in the amount of times local people raised the issue with him. He said: "I am under no illusions that this

will be a quick-fix, but we are stronger together than apart, and I am looking forward to taking on this work."

More: www.stevebrine.com/nuisancecalls

Summer-born children

Steve Brine is looking at the issue of summer-born children, as revised guidance is issued on when children start school.

Steve said; "Local authorities need to take this on board quickly. All children are different and parents should be centre-stage in deciding which entry-level is best for their child."

Westminster Report

MAJOR BREAST CANCER REPORT LAUNCHED

Local MP Steve Brine has launched a pioneering new report looking at the issue of breast cancer.

The report called *Age is just a number* follows a major inquiry led by Steve Brine and outlines new and urgent recommendations to combat the issues surrounding inequality in treatment, services and support available to older

breast cancer patients.

Pictured right from left to right; Steve at the launch with Joan Sherrin, Christina Heys and Jane Trollope from Winchester Breast Cancer Support Group with renowned RHCH Breast Surgeon Dick Rainsbury who gave evidence to the inquiry.

More on the report and Steve's work as Chair of the All-Party Breast Cancer Group in Parliament:
www.stevebrine.com/breastcancer



SCHOOL ANNUAL

Groups from local schools regularly visit Parliament to take the tour and see democracy in action.

Local MP Steve Brine often meets up with them, either to just welcome them to Westminster or hold a Q&A with students. If you are a teacher at a local school and would like to do this, please email steve.brine.mp@parliament.uk



SIKH COMMUNITY PRAISED IN COMMONS

Steve Brine joined MPs from both main parties in a celebration of Sikh life in Britain at a special Westminster Hall debate earlier this year.

The event was led by Steve's colleague Gareth Johnson, Conservative MP for Dartford, and focused on a number of issues, including the carrying of the kirpan, and the wearing of turbans in airports.

Steve spoke about the vibrant and lively Sikh community in Hiltingbury and praised the fact many Sikhs' serve with distinction in the British Armed Forces. He said that, closer to home, many members of the community engage with him on all sorts of local issues including the vexed issue of a local bus service to Southampton, which Sikh constituents need to travel to Temple.

Steve Brine with Tarlok Bhambra; a member of our local Sikh community, CultureNet and a trustee of Age UK Winchester



GET BRITAIN CYCLING

Steve Brine played a strong part in a recent parliamentary debate about cycling, as he challenged councils and developers to step up to the plate and realise the opportunities to increase cycling across Britain.

Speaking in the 'Get Britain Cycling' debate in September, the MP highlighted the need for leadership at local level if cycling numbers are to continue rising and stressed the need for new developments to 'build in' cycling at the planning stage.

In addition, and following the publication earlier this year of a landmark report from Steve's All Party Cycling Group, he challenged the Cycling Minister to look again at the improvements at junction 9 of the M3, which used by a huge number of his constituents.

You can find out more about the work Steve carries out on cycling via www.stevebrine.com/cycling

'WORLD CLASS' CANCER CENTRE ON OUR DOORSTEP



Steve and Tim chatting on the ward with members of the team

Steve Brine discussed how the UK can tackle the "quiet epidemic" of oesophageal cancer with a leading Southampton surgeon earlier this Autumn.

He met Mr Tim Underwood, who is based at Southampton General Hospital, who said cases of the cancer – which affects the gullet or food pipe – are on the rise, with men three times more likely than women to develop the disease.

Mr Underwood told the Chandler's Ford MP that symptoms included food getting stuck when you swallow and persistent heartburn, and encouraged anyone worried to see their GP.

Steve says; "This was both an inspiring visit and a deeply worrying one. The expertise Cancer Research UK have based in Southampton is world-class and it was impressive to see such cutting edge research taking place.

"Given the growing incidence we have with the disease attention clearly needs, in the short term at least, to be paid to lifestyle choices, backed by awareness of the symptoms. This was such a useful visit for me as a local MP but also very much so in the context of my work in Parliament in this field."

NEWS IN BRIEF



NEW SCANNERS AT RHCH

The MRI and CT scanners at Royal Hampshire County Hospital were officially reopened in the summer, following a devastating fire in 2011 which gutted the unit.

Steve says: "I vividly remember seeing the damage after the fire and it was so sad to see. This is a fantastic new facility for the hospital and, coming right after the new Outpatients as it does, is more very welcome investment."

TIME TO ACT ON HILTINGBURY ROAD SAY MP AND COUNCILLORS

CAMPAIGN

Chandler's Ford MP Steve Brine was saddened and dismayed to hear that Hiltingbury Road has been the scene of more accidents in recent weeks and has visited the area recently (pictured) to discuss options for improving road safety with local councillors Judith Grajewski and Parish Council Chairman, Margaret Atkinson.

Steve says; "I often drive down Hiltingbury Road and know all too well that the combination of traffic volume, speed, inconsiderate parking and the sheer number of pedestrians can create difficult conditions at busy times.



Steve hearing first hand about some of the issues at the junction

"Hampshire County Council has already provided extra signage and islands to slow down traffic and help with crossing the road but I will be asking the local council to look again at traffic regulation orders along the road and asking the police for their help with antisocial parking and speeding. I also want to encourage all local schools to take up the County Council's Streets Ahead pedestrian training and Junior Road Safety Officer initiatives to help our schoolchildren stay safe."

WHAT'S YOUR VIEW?
www.stevebrine.com/hiltingburyroad or email steve.brine.mp@parliament.uk

GOT A QUESTION FOR SOUTH WEST TRAINS?

Are you a regular user of train services from Winchester, Shawford or Chandler's Ford?

Local MP Steve Brine is and he's arranged for South West Trains boss, Tim Shoveller, to answer our questions on Thursday 14th November 2013. This event, which will be held in central Winchester, is free but you must register in advance via www.stevebrine.com/askswt

NEW BUILDING FOR SHERBORNE HOUSE



Steve Brine officially opened a new building at Sherborne House School at the start of the new term, a few months after he cut the first piece of turf.

Aided by the school's four senior prefects, Steve performed the opening ceremony by cutting a ribbon tied across the £1.2m facility, comprising four classrooms and an additional multi-purpose hall, having given an address to the assembled children, parents and guests from Eastleigh Borough Council, who all gathered to watch the ceremony.

CARERS' WEEK SURGERY



Steve held a special carers' surgery this summer as One Community held their annual celebration to raise awareness of unpaid family carers and all they do for their loved ones and the community.

The 2013 Carers' Week campaign focused on how the UK's current carer population is coping, how effectively Government is supporting the growing numbers of carers, and whether the wider population is prepared for future caring responsibilities.

Steve said; "This is now the third year I have held a dedicated Carers' Week surgery for constituents in Chandler's Ford and it was, as usual, humbling to hear some of the amazing things people do to look after family members when they are sick.

"I don't think as a society we look after carers as well as we might and the bureaucracy we put them through is often suffocating so it was so useful and gave me some further valuable insights."

CAMPAIGN

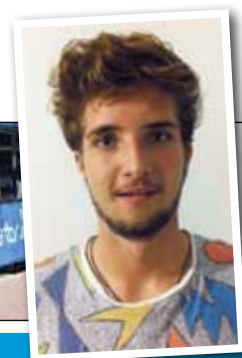
A BETTER DEAL ON FARES FOR YOUNG PEOPLE



Steve Brine is working with bus operators and a Member of the Youth Parliament to deliver fairer fares for young people.

A recent meeting with the boss of Bluestar made the case for permanent discounts, possibly up to age 19. Steve has been asked to help by MYP, Seb Ward (pictured), who has made improving transport for young people one of his priorities.

Steve says; "The initial meeting with Bluestar was really useful, they want to help young people with bus travel, probably involving some form of key-card. We look forward to working with them and any other companies as part of this fair fares campaign."



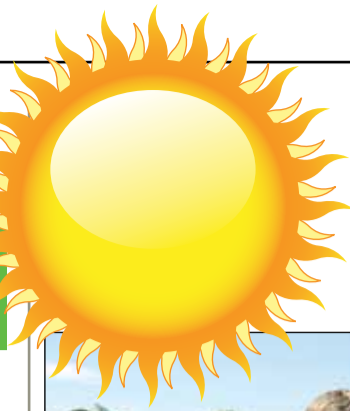
More at www.stevebrine.com/fairfares

UNDERAGE ALCOHOL SALES - DO WE HAVE A PROBLEM?

A few concerns have been raised about how easy it is alleged that underage children can get hold of alcohol in Chandler's Ford.

Steve told The Chandler's Ford Post; "This has come up across my desk of late and it has caused some concern. I would be very interested in hearing from any Chandler's Ford and Hiltingbury constituents if they have any views or experiences in this respect."

NEWS IN BRIEF



SUMMER IN CHANDLER'S FORD

CAN YOU OFFER A BIT OF YOUR TIME TO HELP OTHER LOCAL PEOPLE?

Chandler's Ford Good Neighbours needs more drivers to help with transport, shopping and other essential needs.

Expenses paid and no weekly commitment to help. Call **07914 757380** or visit www.chandlersfordgoodneighbours.org

WELCOME FOR FREE SCHOOL MEALS

Steve Brine has welcomed a Government initiative to provide free school meals for all schoolchildren up to and including Year 2, in a change which will save parents about £400 a year per child.



Steve, pictured here with the dinner ladies of Scantabout Primary School, said: "I am very pleased at this specific pledge to ensure every child in those crucial early school years has a warm meal every lunch time; the evidence points clearly to the benefit of that."

DEMENTIA FRIENDLY COMMUNITIES

Are you interested in joining the fight against dementia and providing a voice for those with dementia?

Andover Mind covers the Chandler's Ford area, and they are seeking Ambassadors who are willing to promote the interests of people with dementia and dementia friendly communities.

You can find out more via www.andovermind.org.uk/hampshire-dementia-action-alliance or call Clare Kavanagh on 07827 317737.

Steve's regular Hampshire Chronicle column



'Steve Brine, getting in the paper... and getting things done.'



Re-elected Chandler's Ford County Councillor, Colin Davidovitz, with Steve and Parish Council Chairman, Margaret Atkinson at Funtasia in May. www.stevebrine.com/funtasia



Steve and Borough Cllr, Judith Grajewski (centre), chat with a resident at the street surgery held at the Fryern Arcade in July as part of the MP's Summer Tour. www.stevebrine.com/summertour13

PRIDE IN CHANDLER'S FORD CAMPAIGN

Steve Brine is joining forces with local councillors for a new 'Pride in Chandler's Ford' campaign.

The initiative aims to root out any issues which blight the local environment and spoil the natural beauty of Chandler's Ford, Hiltingbury and North Millers Dale. One early target follows a number of complaints made about grass verges being ruined by cars and trade vans

failing to park sensibly on roadsides or driveways.

Cllr Judith Grajewski said: "I recently spent a morning with Steve, and took the opportunity to show him the problems we are facing, including so many damaged verges."

Steve added: "We are all proud of where we live and rightly so, let's celebrate what's great about Chandler's Ford and make it even better!"



Do you have a suggestion for the Pride in Chandler's Ford campaign? Goto www.stevebrine.com/prideincf

GREEN BAG ANGER GROWS

Anger continues to mount after Eastleigh Borough Council decided to discontinue the weekly green waste bag collection in April 2014. The response from residents to an article in the recent *InTouch* newsletter from local Conservatives has been significant.

While EBC says that users of the current service were consulted about the change, many residents are unhappy about the way the consultation was carried out. Local councillors, including



Cllr Judith Grajewski

Cllr Judith Grajewski, (pictured) have continued to receive representations from worried residents on this, and Conservative councillors continue to press Eastleigh civic bosses.

STEVE VISITS 'REAL GEM' OF A LOCAL BUSINESS

Steve Brine MP dropped into Microlink PC earlier this year to take a look at their vision of Universal Inclusivity.

Microlink PC is Europe's leading provider of assistive technology and disability related management solutions and is based on the Chandler's Ford Industrial Estate.

Steve said: "Microlink PC is a hugely impressive, and very well-established, company, and I am extremely proud to have them in my constituency. It was a real eye-opener seeing exactly what they do, and it comes across loud and clear that they are

striving to allow people with and without disability the opportunity to achieve their full potential."

Dr Nasser Siabi, Chief Executive, said: "It's our mission to work towards removing barriers through the application of the most innovative and appropriate Assistive Technology products and services, allowing individuals who study and work with disabilities to become more productive and contribute more to society."

More at www.microlinkpc.com



Steve with Nasser Siabi on a visit to the company HQ

Ways to contact your local MP

ONLINE ACCESS

EMAIL steve.brine.mp@parliament.uk

PHONE 01962 791110 or 020 7219 7189

WRITE Steve Brine MP, House of Commons, London SW1A 0AA

WEB APP Load stevebrine.com on your phone



WEBSITE.COM www.stevebrine.com

WEBSITE.TV www.stevebrine.tv

twitter twitter.com/sbrine

facebook facebook.com

