

Steve Brine's CHANDLER'S FORD POST

A positive #PriorityNHS publication from Conservative MP Steve Brine and the team produced at no cost to the taxpayer. It is delivered by volunteers across Chandler's Ford, Hiltingbury and Millers. A **Green Winchester** Publication, printed on paper from sustainable forests.



LOCAL MP TO LEAD KEY HEALTH COMMITTEE

Steve Brine elected to chair Health & Social Care Select Committee

LISTENING AT THE RHCH: Steve paid a New Year visit to the Royal Hampshire County Hospital in Winchester to hear how current pressures are impacting our local NHS and to thank staff for their work. He spent time meeting senior Trust managers before visiting the Emergency Department, where he spoke with team members at length and went on to Clarke and Shawford Wards. Staff there chatted with the MP about the impact on specialist and general wards of the huge rise in demand this Winter for acute services.

Chandler's Ford MP, Steve Brine, has been elected by MPs to chair an influential cross-party committee in the House of Commons.

The Health & Social Care Select Committee has the power to question ministers and conduct inquiries into the public's number one issue.

Steve told *The Chandler's Ford Post*: "Health has been my priority since day one and it's centre-stage right now given the pressures the NHS is under.

"Demand for health services, in primary care and at emergency departments in particular, has reached unprecedented levels

this Winter so our work is more important than ever.

"We will be pushing Ministers on their plan to deal with the backlog caused by the pandemic, the need to recruit a credible future workforce and the many ways innovation and technology can help patients."

The MP said a major focus for the Select Committee this year will be ongoing attempts by Ministers to fund and organise a long-term solution to social care.

See page two for a full #PriorityNHS update including the committee's programme for 2023.

More: stevebrine.com/westminster

WE'RE BANNING THE SUPPLY OF MORE SINGLE-USE PLASTICS

From October 2023, this will include **plates, trays, bowls, cutlery, balloon sticks and certain types of polystyrene cups.**



Inside this edition!

■ **PAGE TWO**
Priority NHS
special

■ **PAGE THREE**
Southern Water
on the spot

■ **PAGE FOUR**
Energy help
extended

WESTMINSTER REPORT

NHS SPECIAL

This year in Westminster promises to be busy, but (we hope) busy with policy debate not personality fever. Nowhere is that debate more alive right now than in the area of health and our MP is at the heart of it.



Steve Brine chairing one of his first select committee meetings flanked by Labour and Conservative MPs in Committee Room 16 at the House of Commons.

Health & Social Care Select Committee 2023 Work Plan

- **Prevention** - A major inquiry into the prevention of ill health; covering topics from obesity and smoking to poor quality housing and the future of vaccination.
- **Digital transformation in the NHS** - Exploring the current use of digital technology and how it needs to change in order to deliver an improvement in services and outcomes for patients.
- **Future cancer** - Examining how we get upstream of some cancers through the use of genomics and the next generation of precision medicine. Will also look at childhood cancers.
- **Emergency care** - Examining pressures on emergency departments with the Royal College of Emergency Medicine to explore the link with excess deaths.
- **Community Pharmacy** - Understanding the role it can play as part of the wider primary care offer to ease the pressure on General Practice and, in-turn, A&E.
- **Assisted dying / Assisted suicide** - A comprehensive look at current palliative care services and what can be learnt from countries where the law is different.
- **NHS dentistry** - Looking at what the NHS can realistically offer and what stands in the way of services.

More: @CommonsHealth



SCAN ME

HAVE YOUR SAY

MORE DOCTORS AND NURSES - PLUS INVESTMENT - IS GOOD BUT WE CAN GO SO MUCH FURTHER. PLEASE SHARE YOUR PRIORITIES FOR IMPROVING OUR LOCAL NHS BY COMPLETING STEVE'S NEW SHORT SURVEY.



Cancer ambition - Steve recently led a major cancer debate in Parliament; outlining his Committee's major report on Cancer Services. "We must meet the target of diagnosing at least three-quarters of cancer at stage one or two when all the evidence says it is most treatable", he said. ■



Pancreatic cancer - Local resident, Richard Murphy who lost his wife (the late Cllr Lynda Murphy) to the disease, visited Westminster to promote Pancreatic Cancer UK's 'No Time to Wait' campaign. Pictured with Anna Jewell from Chandler's Ford who works with the charity. ■



Ovarian cancer - Target Ovarian Cancer are pushing their latest 'Pathfinder' report which shows over 4,000 women in the UK die of ovarian cancer each year. Ovarian cancer is one of the hardest to detect at an early stage. Pictured with Sharon Hodgson MP and Annwen Jones from Target. ■



NATIONAL VOICES - Our MP regularly appears on national television (here talking to Krishnan Guru-Murphy on Channel 4 News) and radio to discuss current, and longer term, issues facing health and social care. Like Steve Brine's Facebook page to be the first to know - fb.com/SteveBrineMP

SOCIAL CARE REMAINS KEY

Local MP, Steve Brine, has welcomed new money to ease patient flow through the NHS.

Ministers confirmed last month an extra £250m to purchase more beds in care home settings allowing those who do not need to be in hospital to leave. This in turn eases the pressure on A&E and ambulance crews who face delays in dropping off their patients.

But he warned of the need to remember domiciliary help (care delivered in peoples' own homes), which makes up the majority of social care, and said a long-term solution was

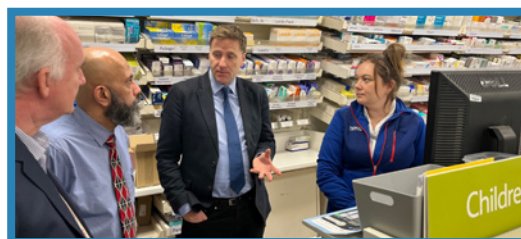


still absent. He says; "We all need to face this one, not just the politicians, and that means deciding how we're prepared to pay for it. Theresa May tried in 2017 and we didn't want our homes to be included, while Boris Johnson put up National Insurance and people didn't want that either. Sooner or later we will have to decide what we are prepared to accept." ■

PHARMACY FIRST

Everyone seems to agree Community Pharmacy could do more to relieve pressure on GPs - especially when it comes to minor ailments and even prevention of poor health.

The Government's Plan for Health, published last year, said pharmacists would be given extended prescribing powers and Ministers say they are "convinced of the case for investment in community pharmacies so that they can do more to help the NHS and the public it serves." Steve Brine recently visited Tesco Pharmacy (pictured) at their Winnall store to meet staff. ■



HOBB-NOBING



Did you know we have a world-leading rehabilitation business based in Martyr Worthy?

MP Steve Brine visited Hobbs Neurological Rehabilitation, based in Bridgets Lane, recently to catch up with the team and hear of their work around the UK and the world.

Co-Founder Helen Hobbs was among those who met Steve and showed him around the centre. ■

SOUTHERN WATER ON THE SPOT

Under fire water boss called to meeting with MP over pre-Christmas supply issues.



Southern Water's Chief Executive met with Steve Brine to explain how thousands of his constituents, many living in Chandler's Ford, were left with no water supply days before Christmas.

Lawrence Gosden explained to the MP how a combination of December's big freeze – followed by a rapid thaw - and a deluge of rain into the water supply works at Otterbourne (and Testwood) left homes reliant on bottled water. An £800m upgrade is underway at those sites which Steve will visit shortly.

Our MP also raised the issue of combined sewage overflows which can force foul water out of Southern Water's systems into waterways. ■

More: stevebrine.com/southernwater

FURY OVER POWER CUTS

MP Steve Brine has spoken out on behalf of city centre businesses after a new wave of **power cuts** hit trade in Christmas week. They are angry after successfully working with their MP to secure a major upgrade to supply in 2021 which the power company promised would end the cycle of outages. Steve told *The Chandler's Ford Post*; "SSEN invested heavily to improve the infrastructure which made December's events even more disappointing. We've identified a small piece of work that needs doing – in nearby Symonds Street – and I am liaising with all concerned to ensure that's done swiftly and with minimum disruption." ■



GOWLING GIBBON



An exciting new **brewery** – based at IBM in Hursley – is putting a fresh take on craft beer and showing how the industry has recovered from the Covid pandemic.

MP Steve Brine visited founder Ralph McFadyen recently, along with County Councillor Jan Warwick, and is a big fan. "We have so much variety in our local businesses and I think Growling Gibbon are producing something pretty special in the Hampshire countryside. I look forward to working with Ralph and helping him along the way." ■

More: growlinggibbon.com

MP SPEAKS TO PARK HOME RALLY

A mass gathering of **park home residents** was addressed by local MP, Steve Brine, when they visited Westminster recently.

Steve, who is part of the team that runs the all-party group for park homes in Parliament, spoke about

the ongoing campaign to end 10% sales fees, the move from CPI to RPI when it comes to calculating pitch fees and what he called 'discriminatory' access to the £400 energy rebate from the UK Government. ■



More: stevebrine.com/parkhomes

MP CALLS FOR VETERINARY REFORM



One of Steve Brine's constituents is Malcolm Morley, currently President of the **British Veterinary Association**, and he recently met the MP to discuss key issues within the sector.

Meeting in Winchester, the pair (pictured) covered the need for a new Veterinary Surgeons Bill, possible amendments to the Kept Animals Bill and the risk Brucella canis presents to animals and humans. bva.co.uk ■

NEWS IN BRIEF

VAT ON SCHOOL FEES?



A backlash is growing over plans by the Labour Party to charge **VAT on school fees** which local MP, Steve Brine, said were a 'false economy'.

Steve says; "Keir Starmer's policy, while superficially attractive with certain 'target' voters I am sure, would make an independent education unaffordable for many families leading to large numbers of pupils leaving for the state sector.

"The proposals, which I think are spiteful and motivated by all the wrong reasons, would risk 134,000 eligible pupils claiming their place in the state sector as a result of fee rises or school closures. Figures from the Department for Education estimate the cost of educating pupils leaving the independent sector would cost £850 million per year, with some £1.3 billion in capital spending required to provide the capacity in existing schools."

He adds; "We often hear Keir Starmer is no threat to local families but this false economy is straight out of Jeremy Corbyn's 2019 manifesto." Steve recently discussed the impact of this policy on a visit (pictured with Head Mark Reach and the Head Boy/Girl) to Sherborne House School in Chandler's Ford. ■

2023 PMQ BALLOT OPEN!



Steve Brine's long-running ballot to secure tickets for **PMQs** kicked off for 2023 with the first winners of the year visiting the House of Commons in early January.

Gerald Williams and Moira Windsor-Morris (Moira runs the Bridge Street Patisserie in Winchester!) saw the weekly head-to-head between Rishi Sunak and the Labour leader before meeting their MP over a cup of tea. ■

ASKTHEAIRPORT MEETING

A special meeting with local airport chiefs came to Colden Common in early February. **ASKtheAIRPORT** was the latest of Steve Brine's public meetings which give constituents the chance to ask questions of those running local services or impacting on their lives. The session was a chance for those at Southampton International Airport to cover issues such as runway expansion and flight paths.

More: stevebrine.com/asktheairport ■

ENERGY CASH FOR SCHOOLS



Local MP welcomes new energy efficiency cash for local schools.



Schools and colleges across our area will benefit from their share of a new £500 million fund to invest in **energy efficiency** upgrades.

The extra money will help them save on energy bills and improve energy efficiency. On average, a primary school will receive £16,000 with a secondary receiving £42,000.

Schools will be supported with installing better heating controls, insulation to reduce heat loss from pipes or switching to energy efficient lighting.

Steve says; "Our kids shouldn't be impacted at school because of Russia's war in Ukraine so I welcome this new scheme to ensure teachers can focus on teaching in a warm and safe environment." ■

Our new **Energy Bills Discount Scheme** provides up to £5.5 billion of support to businesses facing high energy costs until March 2024.

Although wholesale energy prices are beginning to fall, the risk of price volatility remains high – so we must ensure that businesses have the assurance they need during this period. ■

Supporting small businesses



Extending business energy support to March 2024



Reducing business rates bills over the next five years by £13.6 billion



Cutting fuel duty across the UK by £2.4 billion



No corporation tax rises for businesses with profits under £50,000

Conservatives

YOUR MOVE ON ONSHORE WIND

Government moves on onshore wind – now it's our turn says MP



Ministers have set out plans to explore how councils, including Winchester & Eastleigh, can show local support when considering new **onshore wind developments**.

The moratorium will be lifted meaning decisions pass to local councillors and Steve Brine says it's now up to them to respond.

He says; "I get constituents all the time writing to demand new onshore wind sites so I am challenging local councillors to respond to this by asking residents where exactly."

Steve has created a simple online form for you to make suggestions at stevebrine.com/onshorewind ■



MORE TEA ...

Ahmad Tea has been helping the world make a decent **cup of tea** for over thirty five years and they're based locally – in Chandler's Ford.

The company provides some thirty million cups of tea a day in over eighty different countries and local MP, Steve Brine, dropped by to meet the team and have a cuppa just before Christmas.

He says; "Winchester & Chandler's Ford is a great place to do business and Ahmad Tea is making the most of that. Before my visit I never knew there were so many types of tea!" ■

250 YEARS LATER

Not many constituencies are served by a local newspaper that's been in business since before the American war of Independence but that's the case here with The **Hampshire Chronicle**!

The newspaper, first published in 1772, produces a weekly paper every Thursday and is in good health. The current team, led by Editor Kimberley Barber, held a reception (pictured) recently to mark the milestone attended by Steve Brine, council leader Martin Tod and others. ■

More: hampshirechronicle.co.uk



Steve Brine MP *Get in touch with me...*



Steve Brine MP,
House of Commons,
London SW1A 0AA



steve.brine.mp@parliament.uk



www.stevebrine.com



www.facebook.com/SteveBrineMP



www.instagram.com/stevebrinemp



@stevebrinemp



0207 219 7189